

General Information	
Ministerial Decision Type	Miscellaneous
Report Title	Amendment to Road Traffic (Disabled Persons)(Parking)(Jersey) Order 2002, Road Traffic (St. Helier)(Jersey) Order 1996 under Article 68 of the Road Traffic (Jersey) Law 1956 and Motor Traffic (Jersey) Law 1935
Minister	Infrastructure
Signatory	Minister
Lead Department	Infrastructure and Environment (IE)
Lead Directorate	Operations and Transport (IE)
Ministerial Decision Summary: Public or <a href="#">Absolutely/Qualified</a> Exempt	Public Select if more than one Absolutely/Qualified Exemption.
Date decision made if different to date 'Ministerial Decision Summary' signed.	29/01/2025
Report and Supplemental Report Details	
Report Author	Traffic Technical Support Officer
Date of Report	29/01/2025
Supplementary Report Title <i>(If applicable)</i>	Insert Supplementary Report Title.
Supplementary Report Author <i>(If applicable)</i>	Insert Official Title Only.
Date of Supplementary Report <i>(If applicable)</i>	Select Date of Supplemental Report.
Ministerial Decision Report: Public or <a href="#">Absolutely/Qualified</a> Exempt	Public Select if more than one Absolutely/Qualified Exemption.
Relevant Case/Application/URN <i>(Only complete if making a decision related to an appeal/case/application)</i>	Insert Relevant Case/Application.
Relevant Proposition Number <i>(Only complete if presenting Comments or if lodging an Amendment)</i>	Insert P. number.
Relevant Scrutiny Report <i>(Only complete if presenting a ministerial response)</i>	Insert S.R. number.

Associated Law(s) and/or Subordinate Legislation	Amendment to Road Traffic (Disabled Persons)(Parking)(Jersey) Order 2002, Road Traffic (St. Helier)(Jersey) Order 1996 under Article 68 of the Road Traffic (Jersey) Law 1956 and Motor Traffic (Jersey) Law 1935.
Action required if recommendation agreed	Department to take necessary action.
Resource Implications	There are no new financial and/or staffing implications.

### **Introduction**

The Minister for Infrastructure, Connétable of St. Helier and Roads Committee wish to introduce and improve parking and access provisions for disabled persons and cyclists within the St. Helier town centre and at the same time improve Taxi Rank distribution.

Disabled parking provisions are to be increased by three bays on Library Place. The Disabled Bays being introduced will permit a maximum stay of 2 hours, this length of stay has been chosen as the best compromise, providing users enough time for personal visits while also providing turn over to make them available to more users. Adjustment of a loading/unloading length is also sort here to aid deliveries when access to Broad Street is prohibited. Cycle parking is to be introduced, on Library Place, and will be reviewed after construction works are completed on New Cut.(Appendix 1)

After data collection and evidence of usage of the three separate Taxi Rank zones on Library Place, it is advised to keep one existing Taxi Rank and extinguish the other two. There is also demand for a new three car length Taxi Rank on the north side of the Esplanade just west of Anley Street mainly serving the International Financial Centre. The new Taxi Rank requires the extinguishment of four one hour public parking places. These adjusted and new Taxi Rank zones are viewed as adequate to supply available taxis to serve the surrounding areas.(Appendix 2)

### **Recommendation**

- The Minister for Infrastructure is recommended to amend the (Disabled Persons)(Parking)(Jersey) Order 2002 to introduce disabled parking on Library Place and the Road Traffic (St. Helier)(Jersey) Order 1996 to adjust the loading/unloading bay for commercial vehicles with associated updating of the prohibition of waiting area. Amendments will be made under the powers granted to the Minister under article 68 of the Road Traffic (Jersey) law 1956.
- The Minister for Infrastructure is asked to approve a new Taxi Rank in the Esplanade and the extinguishing of two on Library Place.  
The Minister for Infrastructure can create stands for public service vehicles of any class or description on land administered by a parish using powers under Article 37 (3) of the Motor Traffic (Jersey) Law 1935

### **Detail**

#### **Motor Traffic (Jersey) Law 1935**

Remove the Taxi Rank on Library Place (north side) outside Natwest Bank  
Remove the Taxi Rank on Library Place (south side) outside Barclays Bank

Install a Taxi Rank on the Esplanade “North side (from a point 136 yards east of its junction with La Route de la Liberation and a point 26.2 yards further east)”

#### **Road Traffic (Disabled Persons)(Parking)(Jersey) Order 2002**

##### **Schedule 1, St. Helier, Parking places – 2 hour limit**

- Insert an entry in Column 1, after La Motte Street with “Library Place” and add the entry in Column 2 “South side from a point 16.1 yards east of the western corner of No. 13 to a point 20 yards further east”

**Road Traffic (St. Helier)(Jersey) Order 1996**

**Schedule 4, Prohibition of waiting**

- For the entry relating to Library Place, substitute the South side entry in Column 2 for, “South side (between Church Street and a point 36.1 yards east of the western corner of No. 13)”

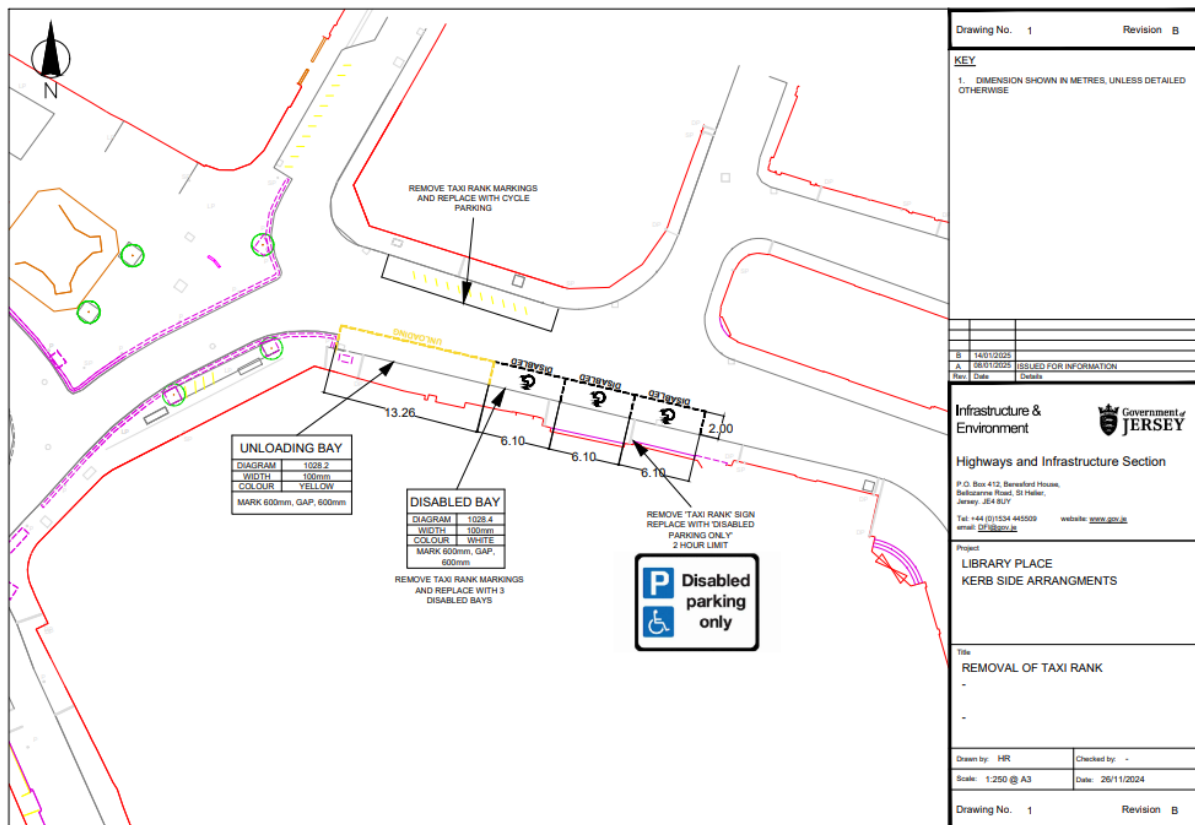
**Schedule 8, Part 2, Paying Parking Places – 1 hour limit**

- For the entry relating to the Esplanade, substitute the “North side (between a point 23 yards east of the boundary of Marina Court and a point 41 yards west of Payn Street)” with “North side (between a point 77 yards east of its junction with La Route de la Liberation and a point 59 yards further south east)”

**Schedule 10, Parking of vehicles on roads for loading and unloading**

- For the entry relating to Library Place, substitute the entry in Column 2 with, “South side from a point 1.6 yards east of the western corner of No. 13 to a point 14.5 yards further east”

Appendix 1



Appendix 2

